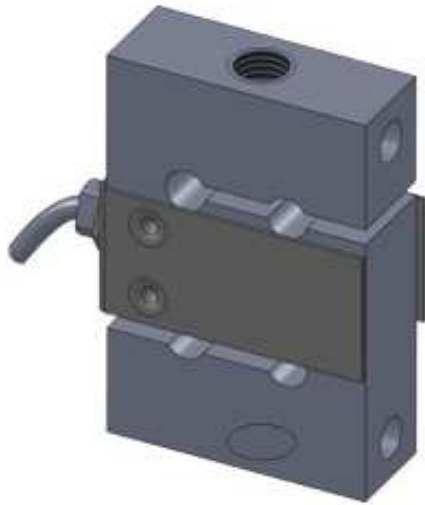


MS10 Sensor

S-Type Sensor

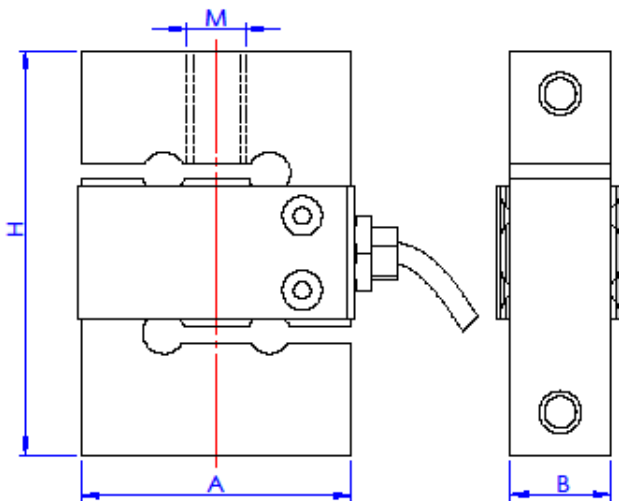


DESCRIPTION

S type load cell, tension and compression. Good output symmetry, compact structure, simple to install, full range of capacities.

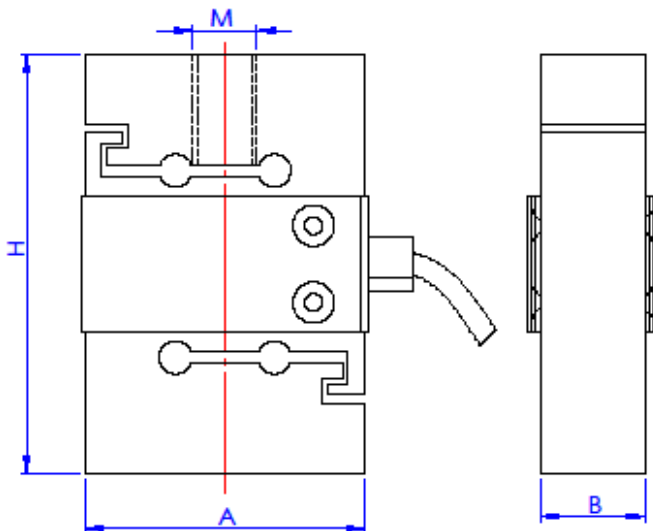
S10A have prevent overload protection design.

OUTLINE DIMENSIONS in millimeters (mm)



Capacity	Size mm			
kg	A	H	B	M
50,100	50.8	76.2	12	M6×1
200,500, 1000	50.8	76.2	19.1	M12×1.75
2000,3000	69.8	100	31.7	M24×2
5000	76.2	100	36.5	M24×2

S10A



SPECIFICATIONS

Capacity	kg	50,100,200,500,1000,2000,3000,5000
Rated output	mv/v	3.0±0.1% / 2.0±0.1%
Non-linearity	%F.S	0.003
Hysteresis	%F.S	0.003
Creep in 30 minutes	%F.S	0.05
Zero balance	%F.S	±1
Input resistance	Ω	389±3
Output resistance	Ω	350±3
Insulation resistance	MΩ	≥5000
Excitation voltage	V	10V (maximum 15V) AC/DC
Environmental protection		IP66
Safe overload	%F.S	150
Ultimate overload	%F.S	200
Operating temperature range	℃	-10~+40
Material		Stainless steel
Cable Length	m	3

Wiring Schematic Diagram

