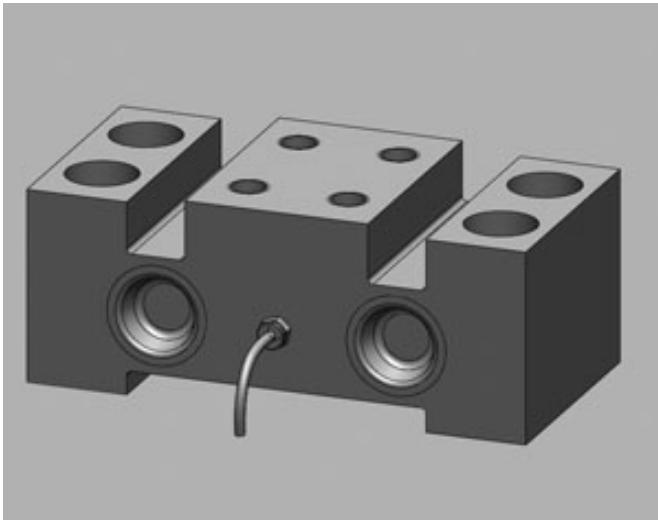


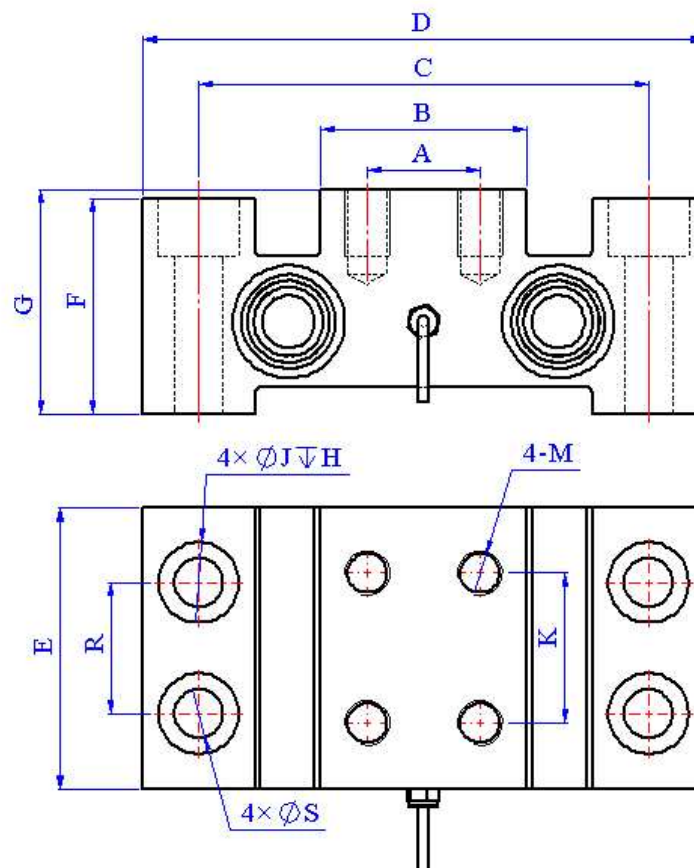
MQCN Sensor



DESCRIPTION

Should be widely in Steel embody scale,
Overhead crane scale。

OUTLINE DIMENSIONS in millimeters (mm)



Capacity	Size mm												
t	A	B	C	D	E	F	G	H	J	K	R	S	M
10	60	85	170	200	80	50	60	7	26	50	50	18	M16
20, 30	60	110	240	300	120	115	120	28	43	70	70	26	M24
40, 50	60	110	240	300	150	115	120	30.5	43	80	70	26	M24

SPECIFICATIONS

Capacity	t	10,20,30,40,50
Rated output	mv/v	1.8±0.1%
Non-linearity	%F.S	0.2, 0.1, 0.05
Hysteresis	%F.S	0.2, 0.1, 0.05
Creep in 30 minutes	%F.S	0.05
Zero balance	%F.S	±1
Input resistance	Ω	700±10
Output resistance	Ω	700±2
Insulation resistance	MΩ	≥5000
Excitation voltage	V	10V (maximum 15V) AC/DC
Environmental protection		IP67
Safe overload	%F.S	150
Ultimate overload	%F.S	200
Operating temperature range	°C	-10~+40
Material		Alloy steel
Cable Length	m	12

Wiring Schematic Diagram

