

# MZ1 Sensor

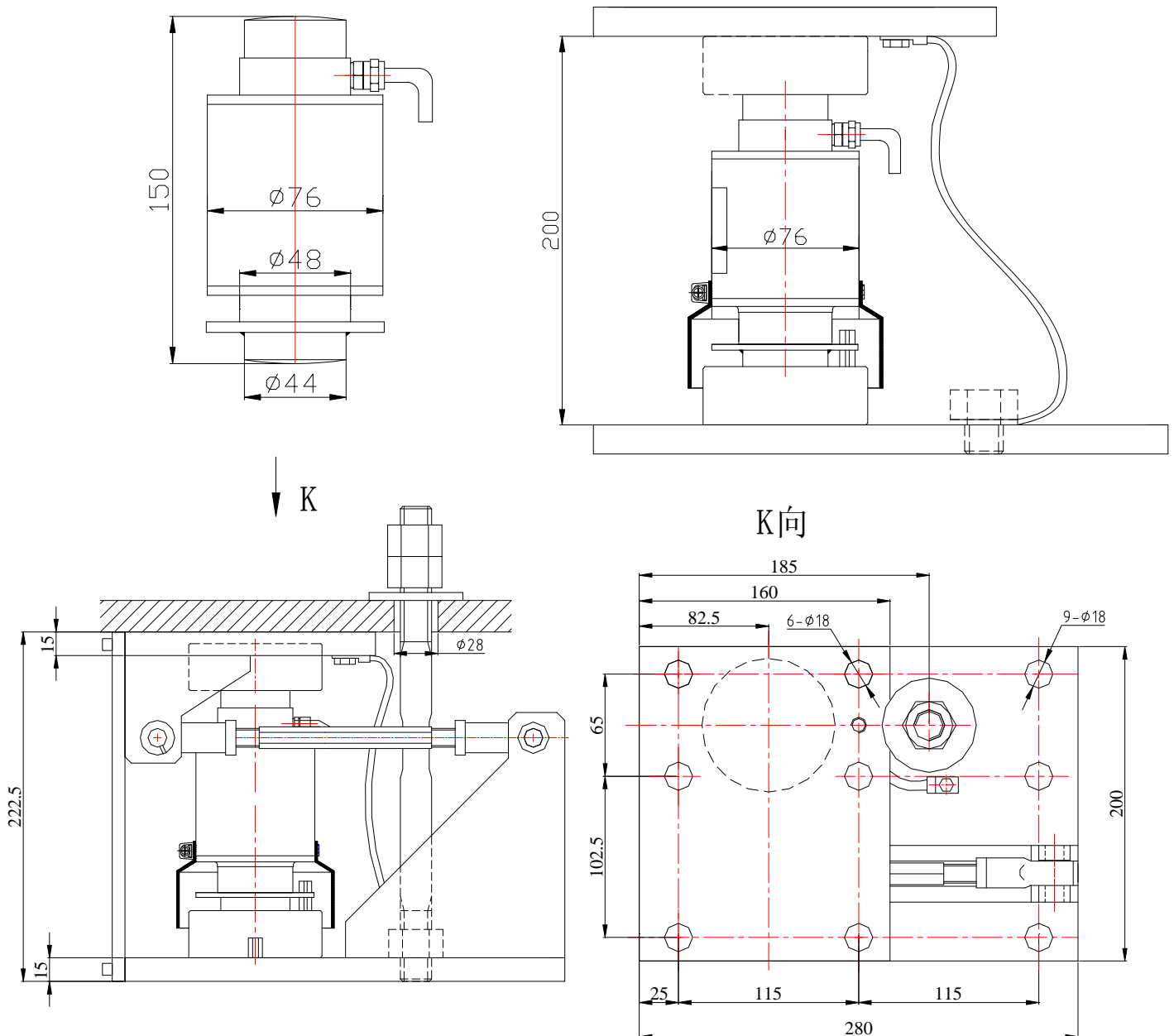
## High Capacity Compression Sensor



### DESCRIPTION

Column type, Laser welding pull ,hermetically sealed IP68, fast dynamic response, strong anti-overload capability, upper ball head load bearing; Simple to install, easy to use, Suitable for electronic truck scale, dynamic railroad scale and big capacity hopper scale, etc.

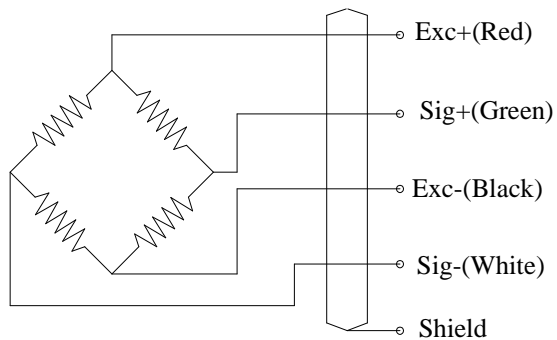
### OUTLINE DIMENSIONS in millimeters (mm)



## SPECIFICATIONS

Capacity	t	10,15,20,25,30,40,50
Rated output	mv/v	2.0±0.1%
Non-linearity	%F.S	0.03
Hysteresis	%F.S	0.03
Creep in 30 minutes	%F.S	0.03
Zero balance	%F.S	±1
Input resistance	Ω	760±10
Output resistance	Ω	702±3
Insulation resistance	MΩ	≥5000
Excitation voltage	V	10V (maximum 15V) AC/DC
Environmental protection		IP67
Safe overload	%F.S	1 50
Ultimate overload	%F.S	300
Operating temperature range	℃	-10~+40
Material		Alloy steel & Stainless steel
Cable Length	m	8m(10t), 12m(15~25t), 14m(30t) 16m(40,50t)

## Wiring Schematic Diagram



## FEATURE

- Capacities 10~50 ton
- Stainless steel housing
- Simple to install
- Self restoring rocking pin

## AVAILABLE

- 6-wire circuit
- Digital Load Cell
- Can match module