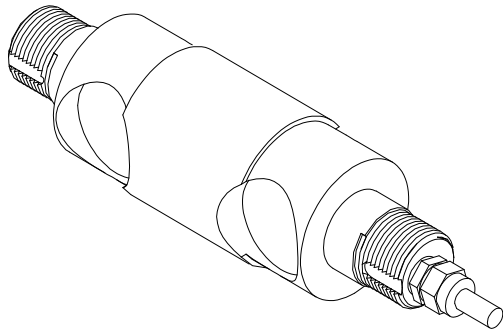


MXZ2 Sensor

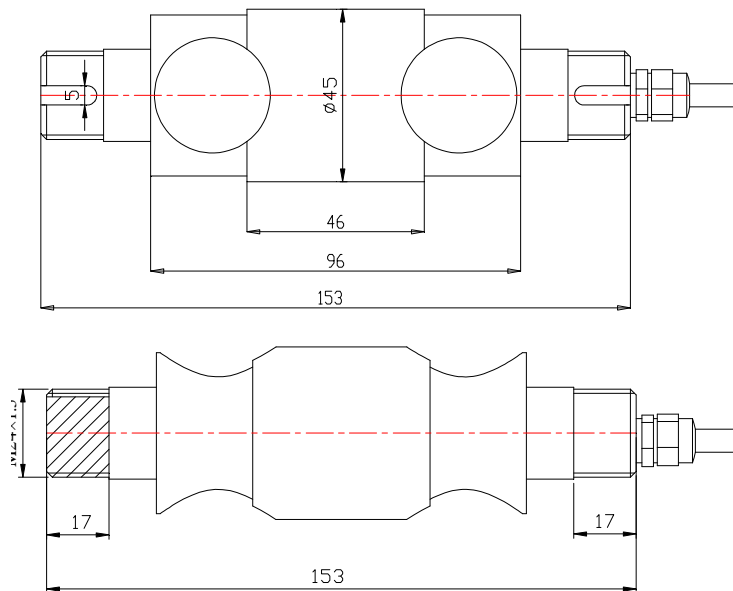
Safe control sensor



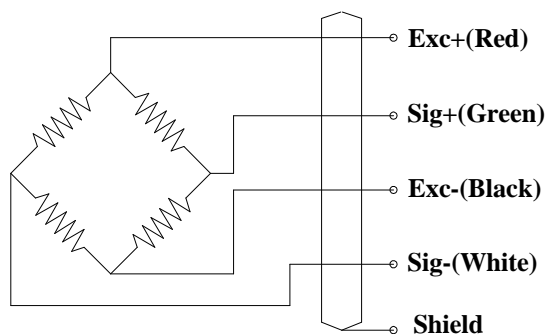
DESCRIPTION

Construction lifter, loading machine etc,
safe limit special situation

OUTLINE DIMENSIONS in millimeters (mm)



Wiring Schematic Diagram



FEATURE

- Capacities 3~5 t
- Can make load cells in different capacity according to customer's in stalling dimensions
- Internal transmitter module
- port metering overload alarm, all kinds of security restrictions occasion
- Output signal :0~10V
4-20mA

SPECIFICATIONS

Capacity	t	3, 5
Rated output	mv/v	2.0±0.5%
Non-linearity	%F.S	0.05
Hysteresis	%F.S	0.05
Creep in 30 minutes	%F.S	0.05
Zero balance	%F.S	±1
Input resistance	Ω	700±10
Output resistance	Ω	700±2
Insulation resistance	MΩ	≥5000
Excitation voltage	V	10V (maximum 15V) AC/DC
Environmental protection		IP67
Safe overload	%F.S	150
Ultimate overload	%F.S	300
Operating temperature range	°C	-10~+40
Material		Alloy steel
Weight	kg	
Cable Length	m	5