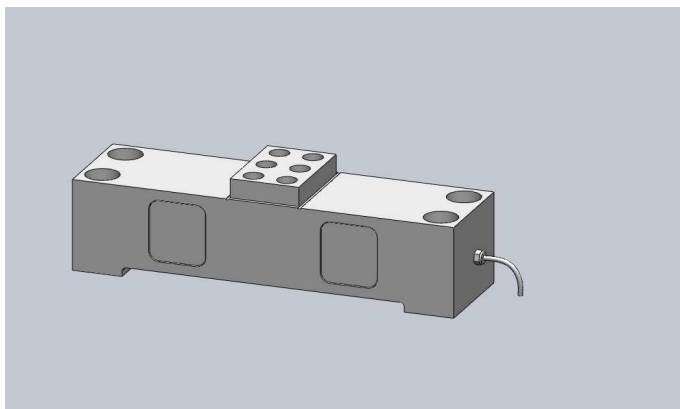


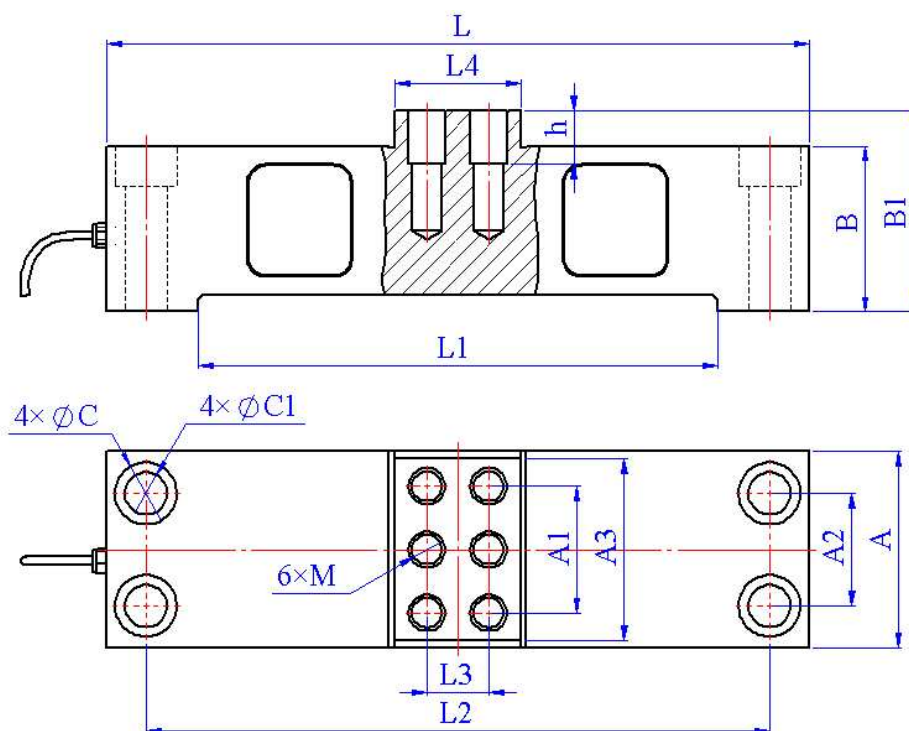
MQC3 Sensor



DESCRIPTION

This is a double side shear beam sensor is designed for large capacity ladle scale weighing. Should be widely in Steel embody scale.

OUTLINE DIMENSIONS in millimeters (mm)



Capacity	Size mm														
t	A	A1	A2	A3	B	B1	C	C1	M	L	L1	L2	L3	L4	h
50	120	75	68	110	105	130	Φ 38	Φ 26	M20 ↓ 30	450	340	398	40	80	32
100	140	90	80	130	118	140	Φ 44	Φ 30	M24 ↓ 36	500	370	444	44	90	38
150	160	102	94	150	133	160	Φ 48	Φ 33	M24 ↓ 36	560	410	500	44	90	38
200	180	110	114	160	150	180	Φ 48	Φ 33	M24 ↓ 40	620	450	560	44	90	40

SPECIFICATIONS

Capacity	t	50, 100, 150,200
Rated output	mv/v	2.0±0.1%
Non-linearity	%F.S	0.1 / 0.05
Hysteresis	%F.S	0.1 / 0.05
Creep in 30 minutes	%F.S	0.05
Zero balance	%F.S	±1
Input resistance	Ω	700±10
Output resistance	Ω	700±2
Insulation resistance	MΩ	≥5000
Excitation voltage	V	10V (maximum 15V) AC/DC
Environmental protection		IP67
Safe overload	%F.S	150
Ultimate overload	%F.S	200
Operating temperature range	°C	-10~+40
Material		Alloy steel
Cable Length	m	16

Wiring Schematic Diagram

